



Cement Bonded Particle Board

Quality, Performance & Reliability



Resistant to:



Moisture



Fire



Sound



Rot



Impact

Manufactured to BS EN 634 Parts 1 & 2



**Call Euroform on
01925 860999**



Euroform have invested years of experience, expertise and commitment to excellence in offering a cement bonded particle board that is specified for its quality, performance and reliability.

Full Fabrication Service



Versapanel is a class '0' cement bonded particle board comprising of wood particles and cement.

- It is suitable for a wide range of applications, giving a high level of performance in the presence of moisture and fire.
- Versapanel has a host of testing, is CE marked and manufactured to BS EN 634 parts 1 & 2.
- Versapanel is available in bespoke sizes and can be fabricated to any size required, with no minimum order quantity.

Manufactured to BS EN 634 Parts 1 & 2



**Call Euroform on
01925 860999**



What is BS EN 634 parts 1 & 2?

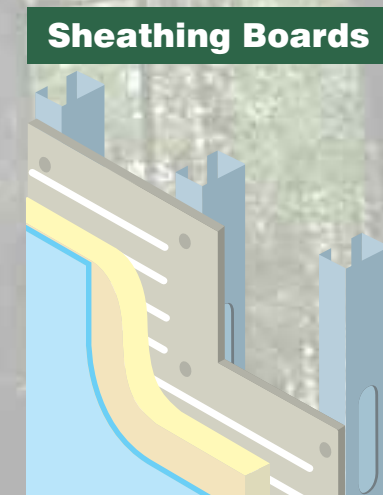
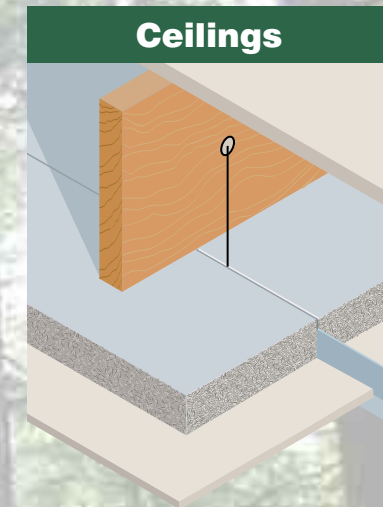
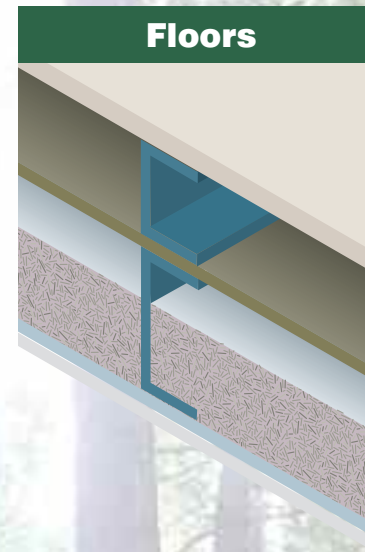
BS EN 634 parts 1 and 2 are the British Standards governing particle boards' and wood-based panels' tensile strength, mechanical properties, density, load factors and resistance to humidity, frost and hard body impact.

Legal Requirement

These standards aren't simply a 'nice to have'. According to the BRE Digest on cement bonded particle boards, *"it is now a legal requirement in the UK under the Construction Products Regulations of 1991 and the Construction Products (Amendment) Regulations of 1994 that wood-based panels be manufactured to and specified and used against a European Technical Specification, principally EN 13986, or a European Technical Approval (ETA). EN 13986 in turn will call up EN 634 for cement bonded particleboard, the UK version of which is BS EN 634"*.

Full information in BRE Digest (Part 3), available from www.bre.co.uk

Applications



Manufactured to BS EN 634 Parts 1 & 2



Call Euroform on
01925 860999

Euroform Products Ltd
Solutions for the building industry

Dimensions

Product Range	Standard stocked panels 2400 x 1200 unsanded grade. All other sizes available to order.			
Unsanded	2400 x 1200	2440 x 1220	2800 x 1200	3200 x 1200
Calibrated	2400 x 1200	3050 x 1220		

VERSAPANEL® CHARACTERISTICS FOR UNSANDED AND CALIBRATED BOARDS

Thickness of board in mm		8	10	12	16	18	22	24	28	36	40
Approx weight per m ² in kg		10.4	13	15.6	20.8	23.4	28.6	31.2	36.4	46.8	52
Airborne sound reduction for a single board in dB		30	31	31	33	33	34	35	36	37	38
	For additional construction advice on systems please contact technical sales										
Manual nailing without pre-drilled holes		Y	Y	Y	N	N	N	N	N	N	N
	Manual screwing with pre-drilled holes suits all thicknesses										
Screwing and power nailing without pre-drilled holes		Y	Y	Y	Y	Y	Y	Y	Y	Y	Y
	Power screwing and nailing suits all thicknesses										
Nailing and screwing into edges		N	N	N	Y	Y	Y	Y	Y	Y	Y
Edge profiling	Rebate	N	N	N	Y	Y	Y	Y	Y	Y	Y
	Groove	N	N	N	Y	Y	Y	Y	Y	Y	Y
	T&G	N	N	N	Y	Y	Y	Y	Y	Y	Y
General internal lining and external cladding	400mm	Y	N	N	N	N	N	N	N	N	N
	600mm	N	Y	Y	Y	Y	Y	Y	Y	Y	Y
Ceilings and soffits	400mm	Y	Y	Y	N	N	N	N	N	N	N
	600mm	N	N	Y	Y	Y	Y	Y	Y	Y	Y

Full technical manual available on request



Manufactured to BS EN 634 Parts 1 & 2



Call Euroform on
01925 860999

Euroform Products Ltd
Solutions for the building industry



From seed...



through sapling...



and mature tree...



to timber product

FSC® independently issued Chain of Custody certification ensures the forest of origin is sustainable, the local ecosystem and biodiversity maintained and forest worker's human rights safeguarded. And all of this is kept in check by rigorous, short-notice inspections and meticulous audit trails.

Versapanel Eco™

Due to increasing demands for FSC® certified building products in the construction industry, Euroform are pleased to offer Versapanel Eco™ for supply where FSC® chain of custody is vital.

FAQ's

Is Versapanel still the same?

Yes, it's exactly the same.

Why is it called Versapanel Eco™?

This is to make it easier for the customer to order the FSC® compliant product.

Why not have all Versapanel as FSC® supply?

Due to high demand there will be limited availability and not all orders require FSC®.



Manufactured to BS EN 634 Parts 1 & 2



**Call Euroform on
01925 860999**



Applications

Wide variety of applications, such as:

- Carrier panel to rainscreen cladding system
- Carrier panel to insulated render system
- Partitions
- Acoustic flooring
- Infill panelling

Features & Benefits

- No minimum quantities
- Bespoke sizes available
- In-house fabrication service
- Range of edge details
- Class '0' fire resistant
- Manufactured to BS EN 634 parts 1 & 2
- CE marked
- Concentrated/UDL load testing to EN 1195 for use in floors
- Tested in accordance with BS EN 594:2011 (Racking Test)
- FSC® Grade available upon request

Resistant to:



Moisture



Impact



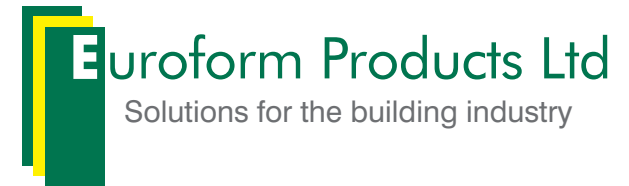
Sound



Fire



Rot



Unit 2 Lyncastle Road, Warrington,
Cheshire, WA4 4SN

Tel: +44 (0) 1925 860999

Fax: +44 (0) 1925 860066

Email: info@euroform.co.uk

www.euroform.co.uk

Due to our policy of continuous development, we reserve the right to change design and specifications without prior notice. Euroform Products Limited does not accept responsibility for any loss as a result of any company or person relying on material in this publication, or for any mistakes or misprints. Although every care is taken to ensure accuracy, this brochure is a general guide and specific technical advice is recommended before proceeding with any transaction. Specific fact sheets and technical information are available from Euroform's technical department on 01925 860999. Reproduction of any part of this publication in any manner is not permitted without prior consent from Euroform Products Limited.

Manufactured to BS EN 634 Parts 1 & 2



**Call Euroform on
01925 860999**

