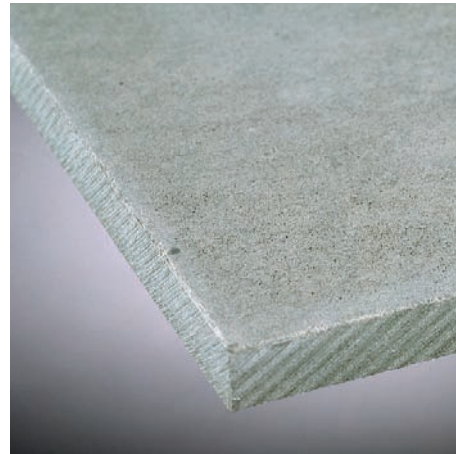
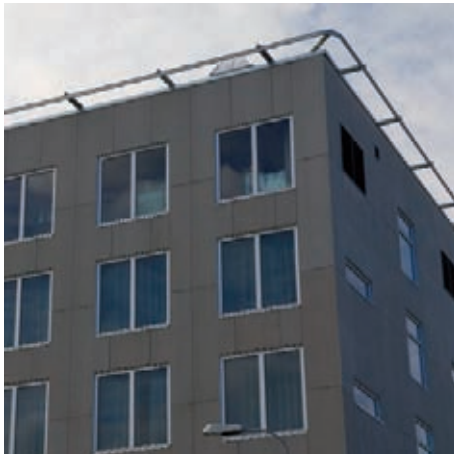
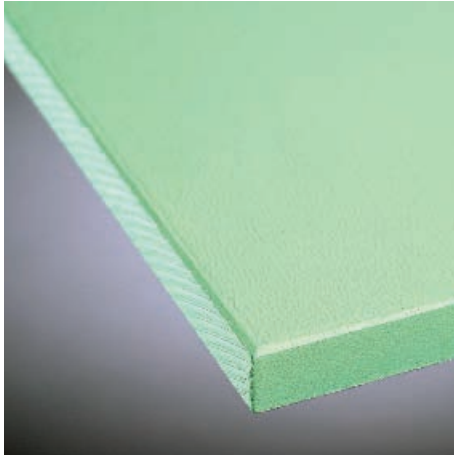


CEMBRIT BLUNN

CEMTONE / HEAVY DUTY



DECORATIVE CLADDING / BASE BOARD FOR EXTERNAL APPLICATIONS

Cemtone / Heavy Duty fibre cement boards for high impact resistance

Cembrit Blunn Cemtone is our Heavy Duty fibre cement board pre-primed and finished with a water based acrylic paint. Designed for use as an exterior cladding, it is also suitable for applications requiring high impact resistance.

Heavy Duty is a Class 0 high density building board comprising cement, cellulose and mineral fillers. Its smooth, water resistant surface makes it ideal as a base board for laminates, composite panels, factory applied or on site finishes.

Colour/Decoration

Cemtone can be supplied in any non-metallic or RAL colour (excluding signal colours) subject to a minimum order quantity of 50m².

Heavy Duty can be veneered or laminated using an alkali-resistant adhesive. If non-porous coating e.g. polyurethane or laminate is to be applied, a balancing coating or laminate should be fixed to the rear.

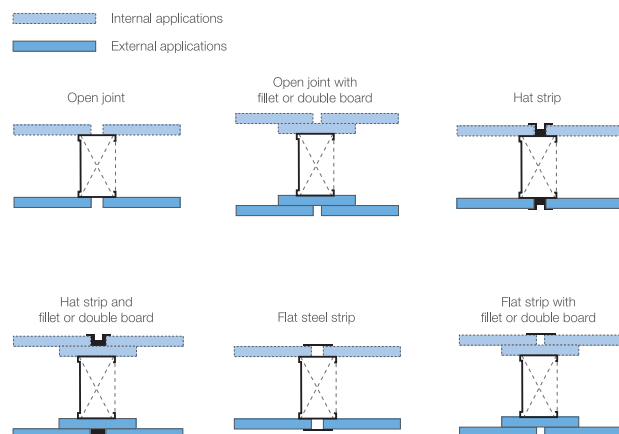
Sanding is not necessary if Heavy Duty is to be painted but the surface must be dry and free of dust. The board should be installed and left for two weeks to acclimatise before paint is applied. Alkali-resistant paint or standard emulsion applied over a cement sealer are suitable finishes.

Installation

Boards are generally fitted portrait format to timber or steel uprights at 40cm or 60cm centres. When fitting to timber uprights holes should be 3mm diameter larger than the screw diameter, and a minimum of 25mm from the long edge, 75mm from the short edge.

When fitting to steel uprights, holes should be 3mm diameter larger than the screw diameter and a minimum of 30mm from the long edge, 100mm from the short edge.

Examples of external and internal joints and junctions: timber or metal frames



For details of trims, channels, fittings etc, please refer to the Cembrit Blunn 'Fittings and Accessories' brochure.



Exterior Applications

The gap between the boards should be equal to or greater than the board thickness.

Screw fixed boards require pre-drilled holes 2mm larger than the screw.

Fastenings		Transverse Load
Thin steel nail		7.5
Hook		15.0
Plate screw		35.0
Rubber nut		60.0
Wing screw		85.0
Anchor screw		95.0

Where Heavy Duty board is to be laminated, painted or finished with aggregate, a minimum 22mm ventilation gap is required behind the board to allow condensation to be removed. The cavity must be open to air at the top and bottom of the installation and must not be blocked at any point.

Fixings

Timber studs 40x2.3mm nail, Steel frame 35x4.2mm counter sunk cutting head screw.

Fittings

Fittings are easily attached, results will depend on the weight of the object and type of fastener used. Heavy attachments should be centered on internal studwork or should be reinforced with a backing piece behind the board.

Ceilings

Suspended ceilings should be coated on both faces and edges so that boards do not bend in humid environments

Technical information

Range

Cemtone

Size	Weight	Density	Dimensions	m ² per board	Thickness Tolerance	Width Tolerance	Length Tolerance
8mm	14.6 kg/m ²	1675kg/m ³ (± 125)	1200 x 3050	3.66	± 0.8mm	± 6mm	± 8mm

Heavy Duty

Size	Weight	Density	Dimensions	m ² per board	Thickness Tolerance	Width Tolerance	Length Tolerance
6mm	10.9 kg/m ²	1675kg/m ³ (± 125)	1200 x 3050	3.13	± 0.6mm	± 6mm	± 8mm
8mm	14.6 kg/m ²	1675kg/m ³ (± 125)	1200 x 3050	3.66	± 0.8mm	± 6mm	± 8mm
10mm	18.2 kg/m ²	1675kg/m ³ (± 125)	1200 x 3050	3.66	± 1.0mm	± 6mm	± 8mm

Other sizes and thicknesses are available to special order

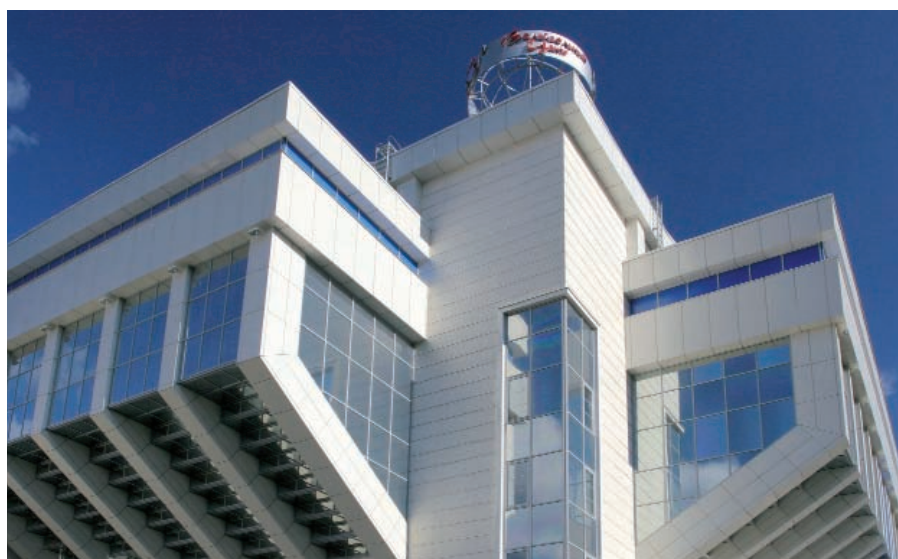
Cemtone and Heavy Duty

Cemtone and Heavy Duty are classified as NT A3 I pursuant to EN 12467:2004

The boards are classified as NT A3 I, pursuant to EN 12467:2004

- NT – The boards contain no dangerous additives and do not give off any harmful fumes or odours
- A – The boards are designed for applications where they may be subjected to heat, high moisture and severe frost (e.g. external cladding)
- 3 – The boards have a minimum flexural strength when in use of 10 Mpa
- I – The boards are cut to size

Water absorption	12% (6-18)
Moisture content	5% (3-7)
Thermal conductivity	0.4 W/mk
Coefficiency of thermal expansion	8x10 ⁻⁶ m/m°C
Specific heat	0.9kJ/kg°C
Temperature range maximum	Cemtone max 80°C Heavy Duty max 150°C
Impact strength (Charpy) with grain	9 kJ/m ³
Bending strength dry with grain	24 (21-27) MN/m ²
Modulus of elasticity dry with grain	8 (6-10) GN/m ²



Fire Resistance

Cemtone is Classified as
A2 S2-d0 – EN 13501-1:2002
Reaction to fire
Cemtone report number VTT-S-7438-06

Heavy Duty is Classified as
A2 S1-d0 – EN 13501-1:2002
Reaction to fire
HD report number RTE 610/05
8mm thick HD as a covering to SFS 4191 E
Cemtone report number VTT-S-6048-07



Storage

Boards kept under cover, raised off the ground with supports at maximum 500mm centres. If boards become damp they should be placed on edge and supported across their width to allow rapid drying. Boards should never be installed damp.

Handling and working environment

Dust is minimised when the following tools are used:

- circular saw with dust cover and collector
- keyhole saw/jigsaw for cutting large holes
- universal saw for cutting small quantities
- hole saw for drilling holes with sockets
- hand-scriber with hard metal point
- carbide tipped masonry drill
- Face masks are recommended when there is no vacuum extractor or when large areas of boards are being cut

Applications

With their durable formulation, weather resistance and almost limitless colour range, Cemtone / HD are ideal for traditional external and rainscreen cladding applications, or as highlights or features to enhance external designs.

- Rainscreen cladding
- Curtain walling
- External facades
- Infill panels
- Balcony fronts
- Fascias and soffits
- Gable end walls

Also in the range of Cembrit Blunn high performance building boards and cladding panels:

- Cembonit
- Cemwood
- High pressure laminate
- Cempanel
- Special performance
- Multi-purpose
- Incolor

Cembrit Blunn Limited

The information contained in this publication and otherwise supplied to users of the company's products is based on the company's general experience, best knowledge and belief. However, because of factors beyond the company's knowledge and control, which can affect the use of the products, no warranty is given or implied with respect to such information.

The company's policy is one of continuous improvement. Cembrit Blunn Limited therefore reserves the right to alter specifications at any time and without notice.

As with all manufactured materials, colours and textures of slate may vary according to light and weather conditions. It is advisable to ask for samples of slate prior to specification and purchase. Owing to this and limitations of the printing process, colours of slate in this brochure may only be taken as indicative.

Please ensure that you have the latest version of this datasheet by checking that the publication date on the top right of the front cover corresponds with the downloadable version on our website.

Cembrit Blunn Limited

57 Kellner Road, London SE28 0AX

T +44 (0)20 8301 8900 F +44 (0)20 8301 8901

E sales@cembritblunn.co.uk W www.cembritblunn.co.uk

Branch listings

- | | |
|----------------|-----------------------|
| 1 London | T +44 (0)20 8301 8900 |
| 2 Southampton | T +44 (0)23 8061 5631 |
| 3 Bovey Tracey | T +44 (0)1626 835722 |
| 4 Llandow | T +44 (0)1446 773777 |
| 5 Normanton* | T +44 (0)1924 890890 |

* Main cladding building board branch.

